

70 SEC 16. T 7 N. R 2 W.

This Map as presented was ordered approved by the Board of County Commissioners of Weber Co. Utah Monday Dec. 6th 1898 as appears more fully by the minutes of date hereinafter given
 Newton Farr, Clerk;
 By D. R. Johnson, Deputy Clerk.

EMMA R CROPSEY. LOT 4. 79.21 ACRES

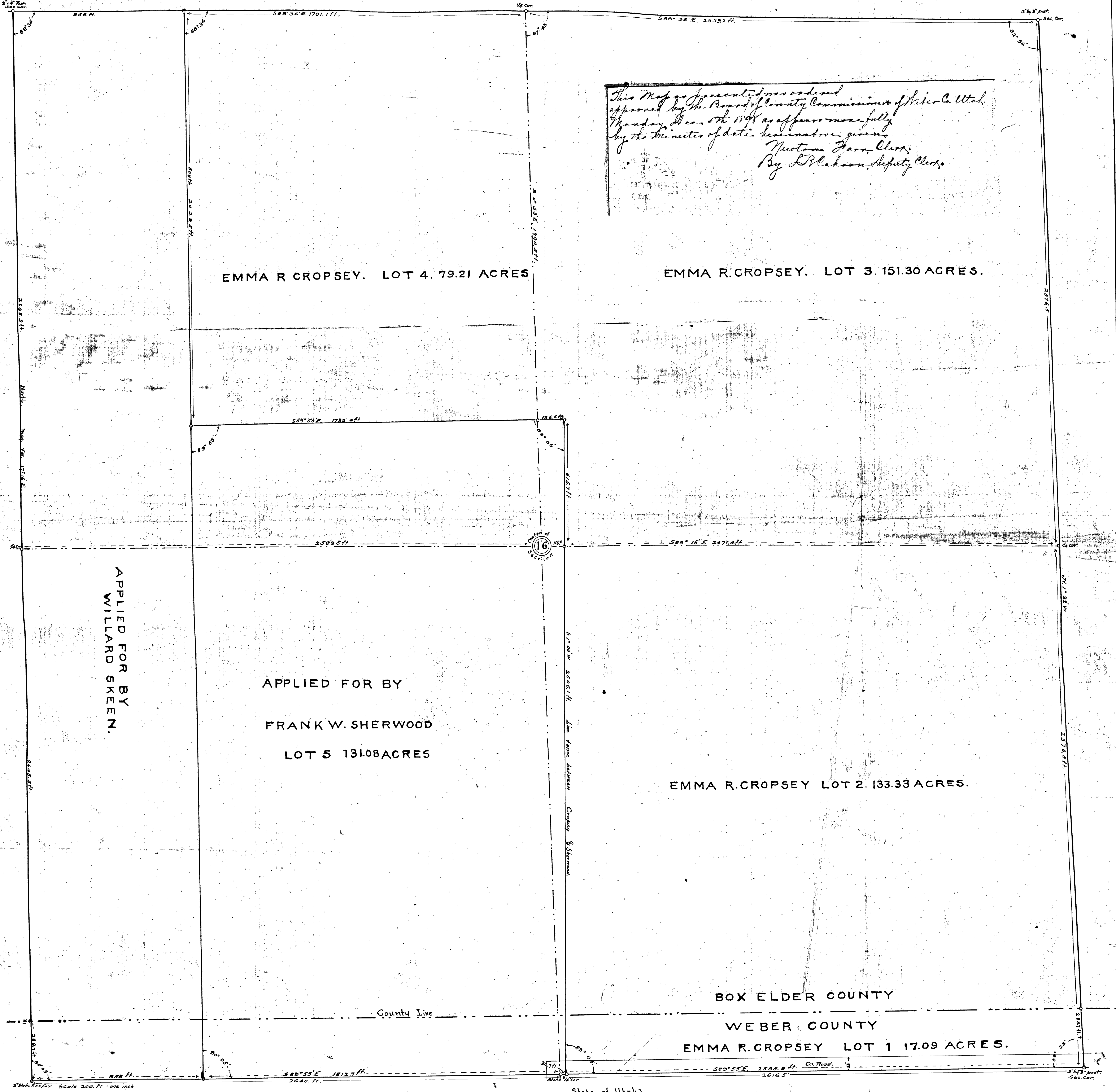
EMMA R. CROPSEY. LOT 3. 151.30 ACRES.

APPLIED FOR BY
 WILLARD SKEN.

APPLIED FOR BY
 FRANK W. SHERWOOD
 LOT 5 131.08 ACRES

EMMA R. CROPSEY LOT 2. 133.33 ACRES.

BOX ELDER COUNTY
 WEBER COUNTY
 EMMA R. CROPSEY LOT 1 17.09 ACRES.



Scale 200 Ft. = one inch

State of Utah }
 County of Weber } ss.
 I, Geo. G. Tyler, County Recorder of Weber County, Utah, hereby certify that this is a true and correct copy of a plat filed in this office.
 December 6th A.D. 1898.
 By D. R. Johnson, Deputy Recorder.

State of Utah }
 County of Box Elder } ss.
 I, Geo. G. Tyler, County Recorder of Box Elder County, Utah, hereby certify that this is a true and correct copy of a plat filed in this office.
 A.D. 1898.
 County Recorder.

State of Utah }
 County of Weber } ss.
 W. M. Bostaph, here by certify that this plat correctly represents an accurate survey made by me of school section No 16 Township No 7 North of Range No 2 West, Salt Lake Meridian for the parties interested therein.
 W. M. Bostaph, Surveyor.

On this 6th day of December A.D. 1898 personally appeared before me W. M. Bostaph who duly acknowledged to me that he signed the same.
 \$297.65 Paid Dec 6th 1898
 W. M. Bostaph, Surveyor.
 Filed - Plat Book 6, Page 70.
 By D. R. Johnson, Deputy Clerk.

72

70